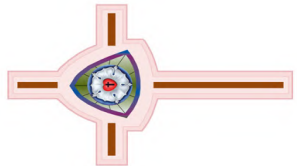


NON-PROFIT
ORGANIZATION
U.S. POSTAGE
PAID
Pottsville, PA
PERMIT NO. 25

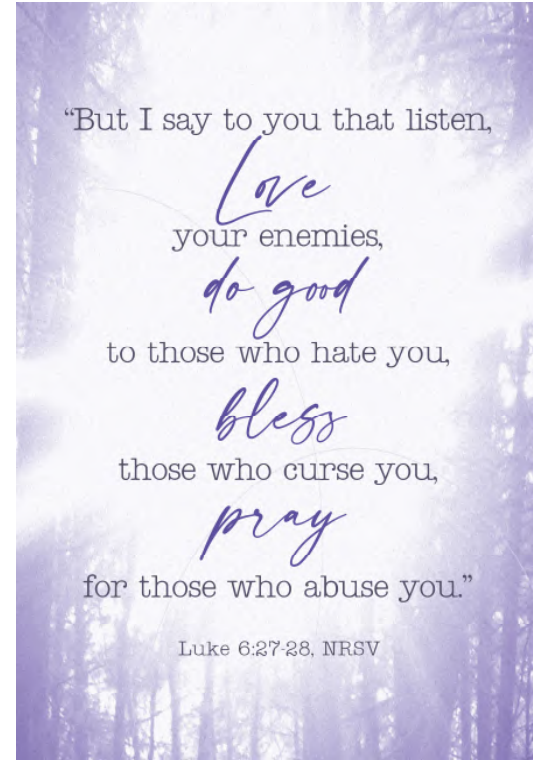
Christ's United Lutheran Church
437 Airport Road
Ashland, PA 17921
www.christsunited.org



FEBRUARY
2022



The CULC Messenger *God's Work,* *Our Actions*



Join us for Worship
Saturday at 6:00 p.m. and Sunday at 9:30 a.m.
Sunday School - 10:45 a.m.



The CULC Messenger
God's Work, Our Actions





Christ's United Lutheran Church

One God. One People. One Purpose.

437 Airport Road, Ashland, PA 17921

www.christsunited.org

(570) 875-1591

February 2022

In This Issue:

The February CULC Messenger is sponsored in Memory of Dorothy Zeigenfuse

Designated Pastor's Message from Pastor Dana	3-4
Council Highlights	5
Prayer List	6
Birthdays	8
Lenten Worship	10
Serving our Community	11
February Calendar	12-13
Social Ministry	14
Adult Sunday School	16
Puzzle	20
Red Cross Blood Drive	21



CHURCH COUNCIL 2021

	Phone	Term Expires
John Denchak President	570-875-4970	Feb. 2023
Vivian Brown Vice-President	717-275-5277	Feb. 2023
Beth Andrews Secretary	570-874-2381	Feb. 2022
Ted Ambrose	570-449-2193	Feb. 2022
Angie Berger	570-875-3598	Feb. 2023
Debra Price	570-875-4272	Feb. 2024
Barbara Stepanchick	570-875-1114	Feb. 2022
Jacob Tice	570-875-2681	Feb. 2024
Dennis Wolfe	570-875-9085	Feb. 2024
Joseph McAndrew Youth Representative		

DESIGNATED PASTOR

Reverend Dana Heckman-Beil

570-875-0792

STAFF

Parish Administrator	Debbie Hall	570-875-1591
	office@christsunited.org	570-789-9722
	Office Hours: Monday-Friday 9:30-3:00	
Director of Music	Jamie Johnson	570-590-1678
Treasurer	Ann Marie Dillman	570-449-2021

Status of Accounts as of December 31

Balance in Checking Account \$65,851.86.

Amount needed in offerings per month to meet our 2021 Annual Budget of \$202,094.00 is \$16,841.17

December income was \$18,672.91.

Expenses for December were \$8,013.03, resulting in a gain of \$10,659.88.

Benevolence Gifts through December was \$12,620.29 (84% of our Benevolence goal of \$15,000.00 for 2021)



2



The CULC Messenger
God's Work, Our Actions



Christ's United Ministry Teams

Christian Education

Evangelism/Outreach

Lutheran Church Men (LCM)

Social Ministry

Stewardship

WELCA

Worship & Music

Multimedia Ministry

Safety and Security Team

Christ's United Committees

Auditing & Finance Committees

Endowment Fund

Mutual Ministry

Nominating

Personnel

Christ's United Lutheran Church

Mission Statement

We the members of Christ's United Lutheran Church, Ashland, desiring to be blessed together with Word and Sacrament and to become more perfectly the Body of Christ in our world, do hereby commit ourselves to a mission which includes a creative re-examination of our worship life; a quality educational program for all ages; intentional witnessing; a serving spirit; and an integrated support system which will undergird our program and the maintenance of our facilities as it encourages improved stewardship.



Pastor's Ponderings....

It's February already! Much has happened in this new year, and much lies ahead. That is the nature of time itself. As a congregation, and individual members of it, the same is true for us. Much has happened in the year now passed and much will happen in the one ahead. And during these transitions it is helpful for us to ask God to help us remember that

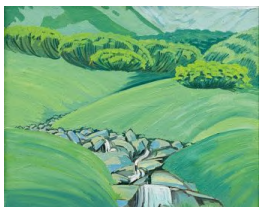
....the jerk who cut you off in traffic last night is a single mom who worked nine hours that day and was rushing home to cook dinner, help with homework, do the laundry and spend a few precious moments with her children,

... that the same folks you seem to know who are always asking for handouts and who really "ought to get a job" are slaves to addictions and we can only imagine in our nightmares,

...that the elderly couple walking annoyingly slow through the store aisles and blocking our shopping progress are savoring this moment, knowing that, based on the biopsy report she got last week, this will be the last year they will be shopping together,

... that out of all of the gifts the greatest gift is love. It is not enough to share that love with those we hold dear. Open your hearts not just to those who are close to you but also to all of humanity. The entire world!

Christian symbol



VALLEY—Valleys symbolize life's dark or low points; for example, Psalm 23:4 refers to "the valley of the shadow of death" (ESV). But valleys also symbolize people who find God's favor because they're lowly and meek. As a result, valleys can be places of blessing. God lifts his people out of despair and rewards their faithfulness. He also promises to "level" conditions by raising up valleys and bringing down mountains (see Isaiah 40:4).

— continued on page 4

The CULC Messenger
God's Work, Our Actions



As we continue in this year of our lord 2022, be slow to judge and quick to forgive. May you be blessed with patience, empathy and love.

Continued blessings in your journey,

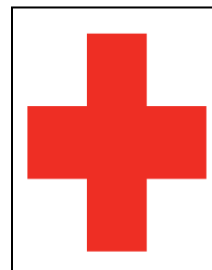
Pastor Dana



A prayer to our omnipotent God

Remind us, O God, that you are above us, watching over us as a good shepherd. You can see what we cannot see. Remind us that you are below us, ready to lift us up in our weakest moments. Remind us that you are behind us, to give us encouragement when we feel like giving up. Remind us that you are in front of us, calling us to move forward in faith, even when we can't see how things will work out. Remind us that you are beside us, holding our hands, no matter what we're going through. Remind us that you are within us, closer than each breath we take.

Jesus, thank you for being Emmanuel, God-with-us, and for not abandoning us. Thank you for sending us your Holy Spirit, who comes alongside to help us, even when no one else can. As we remember you, O God, strengthen our hope and restore the joy of our salvation. Amen.



American Red Cross Community Blood Drive Christ's United Lutheran Church

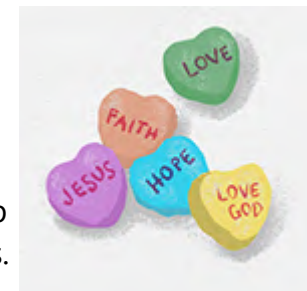
437 Airport Road (Gordon)
Ashland, PA 17921

Monday, February 7, 2022
1:00 p.m. – 6:00 p.m.

Please contact Debbie Hall or call
1-800-RED CROSS (1-800-733-2676) or visit
www.redcrossblood.org
to schedule an appointment.

Beyond candy hearts and roses

The first half of February seems dominated by pink and red, cards and candy. But people not in a loving romantic relationship can sometimes feel left out of the festivities. Of course, all people need love — and certainly love is not limited to the romantic kind. Author Leo Buscaglia, who became known as “Dr. Love” for writing about the topic, said, “Too often we underestimate the power of a touch, a smile, a kind word, a listening ear, an honest compliment or the smallest act of caring, all of which have the potential to turn a life around.”



Jesus taught that loving one another is second only in



The heart of a friend

Big-hearted friendliness comes from generously serving others.

Directions: Start with the first D and move according to the arrows beneath the blanks. Then fill in the letters to complete 1 Peter 4:8-10.

U	D	P	L	Y	G	D	G	I	B
R	E	E	B	C	E	N	G	F	T
I	S	S	V	O	K	I	L	E	S
N	Y	R	E	A	L	N	B	R	V
S	H	O	I	T	I	U	M	G	E
L	M	S	P	Y	G	R	P	R	A
O	Q	B	C	J	K	V	O	E	C

Above all, love each other D , because love
 over a multitude of . Offer
 to one another without
 . Each of you should use whatever
 you have received to others, as faithful
 stewards of God's in its various forms.

1 PETER 4:8-10, NIV

Answer: deeply, covers, sins, hospitality, grumbling, gift, serve, grace



Church Council Highlights from December

- Income for December was \$18,672.91 and expenses were \$8,013.03, resulting in a gain of \$10,659.88
- "Grow One Step" pledge cards have been tabulated. The Stewardship Committee plans on having a short meeting on Sunday, January 9th after church to discuss the results.
- Call Committee update regarding the SALM (Synodical Authorized Lay Minister) Program. It is being looked at and needs to be reworked. There is not enough staff available to continue the program. Many congregations cannot support a full-time pastor, so Bishop deForest recommends partnering or sharing in which one pastor serves multiple churches. Networking with other churches and denominations may be necessary. He wants us to improvise which is what we've been doing.
- Mid-Week Lenten Services: Beginning on Ash Wednesday, March 2nd, Erik Tice will lead worship and for the rest of the Mid-Week Lenten Services, Lois Sterling will lead the singing for the Holden Evening Prayer Service. There will be no Soup

February Council Contact of the month is Ted Ambrose

The Council Contact of the Month is the "on call" member of council, the person to contact if you have any concerns (other than pastoral concerns), or need access to the building. If you need to contact Ted,



Council Member of the Month

The CULC Messenger
God's Work, Our Actions



We Offer our Prayers to...



January 23 – Heidi Walsh (T. Shilling)
Rick Walsh (T. Shilling)

January 16 – Bianca McAndrew (C. Varndell)
Mark Varndell (C. Varndell)
Cheryl Varndell
Mark Brown (V. Brown)

January 9 – Kay Berner (A. Fertig)
Kim Wylie (D. Wolfe)
Leroy Berner
James Houser Sr.

Beverly Gutenkunst (J. Deeter)
Monice Boyer & Family (J. Deeter)

Families & Friends of Lance Wolfe, Albert Stehr & Barry Quick

January 2 – Scarlett Anczarski

Please continue to pray for: Corrine & Josh Coward, Jim Gruber, Jim Hepler (P. Hepler), Tara Houser, Jennifer Koch, Bobby Liem (B. Liem), Gail Lorady, Carl (Mickey) Lute, Dianna Monaghan (P. Lute), Irene Morgan (D. Calhoun), Richard Shoup, Cheryl Varndell, Leo Young, Linda Zerby

Michelle Ambrose, Robert Beecher, Elizabeth Brown & family, Donald Bulla, Arlene Chillis (J. Pennypacker), Edward Emerich (L. Martin), Joe Ferraro Jr., Harry Fishburn (G. Marquardt), Bob Griffiths (I. Morgan), Dan Grow, Minah Horan, Pastor Bob & Donna Hughes (Grubers), Ron James (V. Brown), Jaden Leiby, Debbie Moyer (C. Carl), Lou Ann Olson (T. Shilling), Judy Trautman (G. Marquardt), Karyssa Wenrich

Praying Through the Directory

Each month we will be listing three of our church faith families. We ask that you take the time and uplift them in prayer for their needs and spiritual journey.

This month we pray for:

The Mattis Family - Francis (Frank)

The Traigo Family - Jennifer

The Wolfgang Family - Emerson & Helen & Steven



Friendship SOUP

Make jars of Italian barley soup to share love and warmth with friends.



What you need:

- 1 cup pearly barley
- ½ cup sundried tomatoes
- 1 Tbsp dry minced garlic
- 1 Tbsp dry minced onion
- 1 veggie bouillon cube
- Glass pint jars with lids
- Cardstock
- Scissors
- Pen

What you do:

1. In order, layer the first five ingredients into the jar.
2. Trace the outline of the lid onto cardstock. Cut out.
3. On the card, write these directions: Remove wrapper from bouillon cube. Add contents of jar to saucepan. Add 4 cups water and a can of diced tomatoes. Bring to a boil over high heat, reduce to low. Simmer about 20 minutes, until barley is tender. Serve with parmesan cheese.
4. Place the card atop the lid. Screw on the canning ring to keep it in place.



CULC YOUTH GROUP NEWS

The Youth Group received the following thank you card for their help at the Jared Box Assembly at the Bloomsburg Thrivent office:

“Dear Sally, Family & Friends,

Thank you so much for attending our Jared Box Project Assembly event on December 5th. Thanks to attendees, like you, we were able to create 60 Jared Boxes that will be distributed to children staying at the Janet Weis Children’s Hospital. We hope to continue such an event each year and we look forward to your participation.

With sincere gratitude,”

(Signed by the event

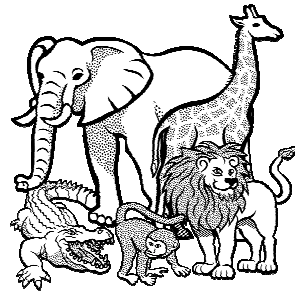
Women of the ELCA

The next Women of ELCA Meeting
will be February 2nd at 6:00 pm

All women of Christ's United are welcome to attend.

The gift of animals

When God made the animals and gave them to the first human being in the Garden of Eden, though they weren't *precisely* the companion Adam needed, not all was lost. According to Genesis 2, God gave Adam the privilege of naming them all, and when you name something or someone, you bond with that being in a special way. Ever since creation, humans and animals have been connected — often for good purposes, though sometimes not; as the saying goes, "It's complicated."



But on the positive side, Trisha McCagh, a renowned animal communicator, writes: "Animals are the bridge between us and the beauty of all that is natural. They show us what's missing in our lives, and how to love ourselves more completely and unconditionally. They connect us back to who we are and to the purpose of why we're here."

I would say animals also show us how to love other people, nonhuman beings and the earth more completely and unconditionally. And they call our attention to God's creativity. Praise God for the gift of the vast variety of animals with whom we share this planet!



PRAYER CHAIN

Each day members of Christ's United bow their heads and lift their hearts in prayer for the ministries of this congregation and people in need.

A copy of the Prayer List is available at worship services each weekend. You may also have an email sent to you on Fridays with a list of those in need of your prayers. A phone chain notifies you of



**Sunday, February 20
10:30 a.m.**

Immediately after worship, on February 20 we will hold our Annual Congregational Meeting.



Please plan to attend and support our ministries here at Christ's United.



Saturday Evening Worship Has Resumed

Saturday Evening Worship Services have resumed at 6:00 p.m. each Saturday, led by Pastor Carl Shankweiler. Holy Communion will be celebrated by Intinction on Saturday evenings prior to Communion Sundays.

Items Found

There are a few items (earrings, pins, etc.- even a puzzle piece) hanging in a plastic bag on the bulletin board in the hallway that have been found throughout the church building. If you are missing anything check to see if its been found and placed in the



The CULC Messenger
God's Work, Our Actions





- 1 Ross Sterling
Kim Walacavage
Shelby Weikel
- 3 Stephen McGrath
- 4 Dennis Wolfe
- 5 Richard Weikel
Kenneth Zweizig
- 6 Brian Bolich
- 8 Kevin Clark (Sr.)
Charlotte Schmidt
- 9 Kevin Clark (Jr.)
Terry Kessler
Allison Rusinko
Kayla Werner
- 10 Rebecca Houser
Jason Miller
Mark Varndell
- 11 Vanessa Pirie
Tanner Wilson
Leo Young II
- 12 Chantelle Klinger
Edward Stepulitis
- 13 Rhonda Carl
Barb Habowski
Deana Leshner

- 15 Alaina Lindenmuth
Melissa Sisko
- 16 Daniel Sisko
Lois Sterling
- 17 Crystal Huber
- 18 Cyrus Clark
Jacob Tice
- 19 Dean Leshner
Pearl Lute
Shaun McNally
- 20 Jim Chappell
Cheryl Denchak
Micah Hepler
Mina Pennypacker
Bill Price
Jax Miller
- 21 Kylei Long
- 22 Teresa Ambrose
Gavin Dwane
Kolton Fetterolf
Brielle Smith
- 23 Ricky Williard
- 24 Zalen Williard
- 25 Charlie Klauger
- 26 Geoffrey Dudick
- 27 Denise Hepler



SATURDAY & SUNDAY FEBRUARY 12 & 13



In 1990, Souper Bowl of Caring began with a simple prayer from a single youth group:

“Lord, even as we enjoy the Super Bowl football game, help us be mindful of those without a bowl of soup to eat.”

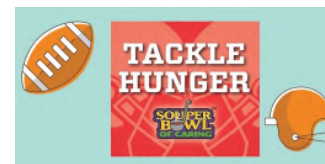
Since then, more than \$170 million has been generated for local charities across the country through Souper Bowl of Caring. It has become a powerful movement that transforms the time around the Big Game into the nation’s largest celebration of giving and caring for those in need.

Through this mission, people learn they can make a positive difference in the world as they collect food, raise money and serve at hunger-relief charities and show caring and compassion in local communities across the country.

Share in God’s love for our neighbors in need and give generously on Souper Bowl Weekend (Feb 12 & 13). All of the donations collected will go directly to our Souper Bowl of Caring Charity of Choice:

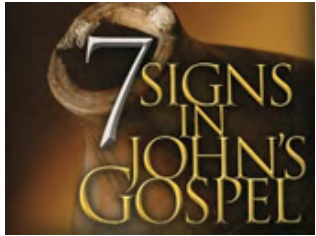
Suggested items for the “Souper” Bowl Collection:
Pancake Mix & Syrup, Juice, Cereal, Tuna, Peanut Butter, Jelly, Spaghetti & Sauce, Canned Fruit

This year the CULC Youth Group will also be holding a Soup Can Collection for “Souper” Bowl Weekend. All soup collected will be donated to Christ’s Cupboard.



The CULC Messenger
God’s Work, Our Actions





Adult Sunday School/Bible Study - The Seven Signs

Christ's seven signs from the Gospel of John take us on a journey beginning with a wedding feast in Cana and ending with the resurrection of Lazarus. Throughout this trip, we will see the incredible events of water turned into wine, a sick boy restored, a lame man brought to his feet, thousands fed, a storm silenced, a blind man gaining sight, and a dead man coming forth from his tomb. The signs prepare us for the promises linked to our Savior's passion, death, and resurrection.

Individually, each sign points to Christ's identity—He is God incarnate. Collectively, the signs prove that Jesus is the Son of God who wields all power in heaven and on earth. Progressively, the signs move forward in intensity and end with a great crescendo—from water and wine to Christ's defeat of death.

Sunday, January 30 - Changing water into wine (John 2:1–11)

Sunday, February 13 - Healing the royal official's son (John 4:46–54)

Sunday, February 27 - Healing the paralyzed man (John 5:1–15)

Sunday, March 13 - Feeding the five thousand (John 6:5–14)

Sunday, March 20 - Walking on water (John 6:16–21)

Sunday, March 27 - Healing the man born blind (John 9)



02/13/93 Ron & Donna Wallace
02/14/10 Nelson & Angie Berger
02/16/95 Traci & Donald Smith Jr.
02/21/53 Cy & Joan Clark
02/23/85 David & Denise Hepler
02/28/70 William & Corrine Coward

Are you a member of Thrivent? Have you designated your 2021 Choice Dollars?

Your participation makes the difference.

Your participation in the Thrivent Choice® program helps Thrivent Financial distribute these funds effectively. Because of you and other members, Thrivent Financial is able to make a difference every day, across the country. Giving back is important to Thrivent Financial because we know it's important to you.

How to Direct Choice Dollars Online

1. Visit thrivent.com/thriventchoice.
2. Click Direct Choice Dollars.
3. Log in by entering your User ID and password. (If you haven't yet registered on thrivent.com, click Register for account access).
4. Choose the organization to which you want to direct Choice Dollars:
 - a. To direct to a previous organization:
 - Click Direct Now next to the organization's name,
 - or • Click on the View activity history link, scroll down and click on the name of the desired organization.
 - b. To direct to a new organization, enter keyword(s) like organization name, ZIP code, cause, etc. Click Search.
5. Choose Direct All or enter a specific number and click Direct Now. Follow the prompts on the confirmation page to direct Choice Dollars.



Don't forget to direct
Choice Dollars®

The CULC Messenger
God's Work, Our Actions



*WITNESSES TO CHRIST:
PEOPLE FROM HIS PASSION*

John tells us why he wrote his Gospel: “Jesus did many other signs in the presence of the disciples, which are not written in this book; but these are written so that you may believe that Jesus is the Christ, the Son of God, and that by believing you may have life in His name” (John 20:30–31). Life! When we believe that Jesus is the Christ, God gives us life—abundant life, forgiven life, and eternal life.

Historically, the Fourth Gospel is likened to an eagle—an image that suggests John soars to heights of glory and grandeur. That’s because the evangelist paints a stunning portrait of Jesus, who is the bread of life, the resurrection and the life, and the way, the truth, and the life. Life in Jesus. That’s God’s gift to you!

This Lent, our life in Christ will be strengthened as we hear the witness of those in John’s Gospel who journeyed to the cross. Along the way, we’ll meet villains, such as Barabbas and Pontius Pilate, as well as sinners, such as Peter (who denied Jesus *three* times), Mary Magdalene (who was possessed by *seven* demons), and Judas Iscariot (who betrayed Jesus for *thirty* pieces of silver).

Please join us for worship as we hear the witness of these people in John’s Gospel:

Ash Wednesday: *John the Baptist*, John 1:29–34

Midweek of Lent 1: *Mary, the Sister of Lazarus and Martha*,
John 12:1–11

Midweek of Lent 2: *Malchus*, John 18:1–11

Midweek of Lent 3: *Peter*, John 18:12–27

Midweek of Lent 4: *Barabbas*, John 18:33–40

Midweek of Lent 5: *Pontius Pilate*, John 19:1–16



2022 Sponsorships

The new sponsorship sign up sheets are now posted on the bulletin board. Sign up for:



- Altar Flowers \$35.00*
- Palms for Palm Sunday \$12.00
- Worship Bulletins \$15.00
- Special service bulletins \$10.00
- Sanctuary Candle \$10.00
- Children’s Bulletins \$10.00

***2022 Altar Flowers Procedure:**

Please sign up for week(s) you would like to sponsor

Altar Flowers and call
“Flowers From the Heart”

570-339-2519

to place order.

Cost is now \$35.00.

Please make payment directly to the florist.

Give Electronically

Checking/Savings Credit/Debit Card
Christ’s United accepts electronic donations

Electronic Giving is a convenient way to provide consistent financial support to our church. Go to www.christsunited.org or scan the QR code to learn how you can participate.

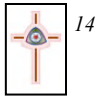


SOCIAL MINISTRY



Fellowship Hour will be held after worship on only the first Sunday of each month. See schedule below for your committee's turn to serve. Please sign up on the bulletin board to help.

- ~ 2022 ~
- February** - Church Council
- March** - Evangelism/
Endowment/Stewardship
- April** - Social Ministry
- May** - WELCA
- June/July/August** -
No Social Hour
- September** - Choir/Worship &
Music/LCM
- October** - Church Council
- November** - Evangelism/
Endowment/Stewardship



We will be collecting the following items for February:

Oatmeal & Cereal

Please place your donations in the shopping cart.

Thank You!

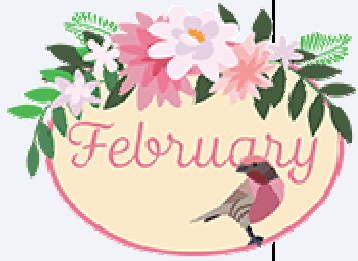
There will be no food distribution in January or February 2022.

The next food distribution date is



Serving Our Community of Faith in February:

Date	Supply Pastor/ Worship Leader	Congregational Representative/ Announcements	Lector	Ushers	Communion Assistants	Acolyte(s)	Crucifer
February 6	John Towey	Ted Ambrose	Vivian Brown	Becky Spencer Robert Carl Ken Dengler Allen Johnson Dorothy Kessler	Larry Wolfgang - AM Donna Wallace Barb Anczarski	Nelson Berger	Logan Walacavage
February 13	Larry Wolfgang	Jacob Tice	Deb Hubler			McKenzie Miller	Emily Miller
February 20	Vivian Brown		Donna Lassen			Raven Marlow	Hayden Marlow
February 27 Transfiguration Sunday			Erik Tice		Vivian Brown - AM Donna Lassen John Denchak	Mason Buhay	Dylan Buhay



February 2022



Sun	Mon	Tue	Wed	Thu	Fri	Sat
		1	2 Groundhog Day 10:00 a.m. Seniors 6:00 p.m. WELCA 6:30 p.m. Choir Rehearsal	3	4	5 6:00 Worship with Holy Communion
6 Scout Sunday 9:30 a.m. Worship with Holy Communion 10:30 a.m. Fellowship Hour 10:45 a.m. Sunday School	7  Blood Drive 1:00 – 6:00 p.m. Red Cross Blood Drive 7:00 p.m. Church Council	8	9 10:00 a.m. Seniors 6:30 p.m. Choir Rehearsal	10	11	12 6:00 Worship Souper Bowl of Caring Collection
13 Souper Bowl of Caring Collection 9:30 a.m. Worship 10:45 a.m. Sunday School 	14 Valentine's Day	15	16 10:00 a.m. Seniors 6:30 p.m. Choir Rehearsal	17	18	19 6:00 Worship
20 9:30 a.m. Worship 10:30 a.m. Annual Congregational Mtg. 5:00 p.m. LCM 6:00 p.m. Property Committee	21 Presidents Day	22	23 8:30 a.m. Newsletter Assembly 10:00 a.m. Seniors 6:30 p.m. Choir Rehearsal	24	25	26 6:00 Worship with Holy Communion
27 Transfiguration Sunday 9:30 a.m. Worship 10:45 a.m. Sunday School 	28 					